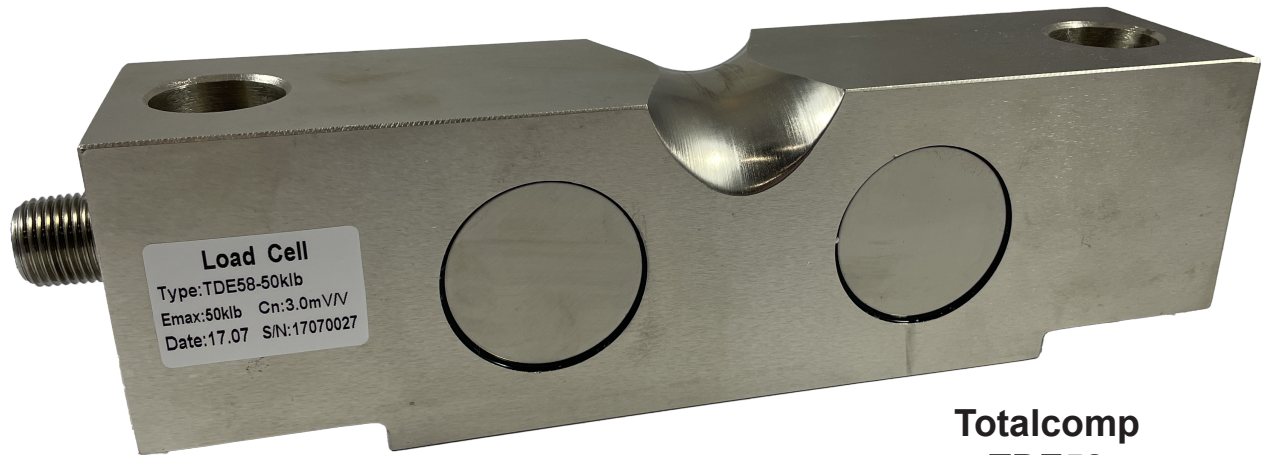


# TDE58

# Truck beam load cell



Totalcomp  
TDE58

## Nickel plated Truck beam load cells

- *Capacities from 10,000 lb to 75,000 lb*
- *35 ft 4 wire cable*
- *Nickel plated construction*
- *Interchangeable with Sensortronics 65058*
- *For use with truck scales*
- *Available with optional mounting assembly*



**Totalcomp**

**Scales & Components**

13-01 Pollitt Drive Ext, Fair Lawn NJ 07410  
Phone 201-797-2718 Fax 201-797-2287

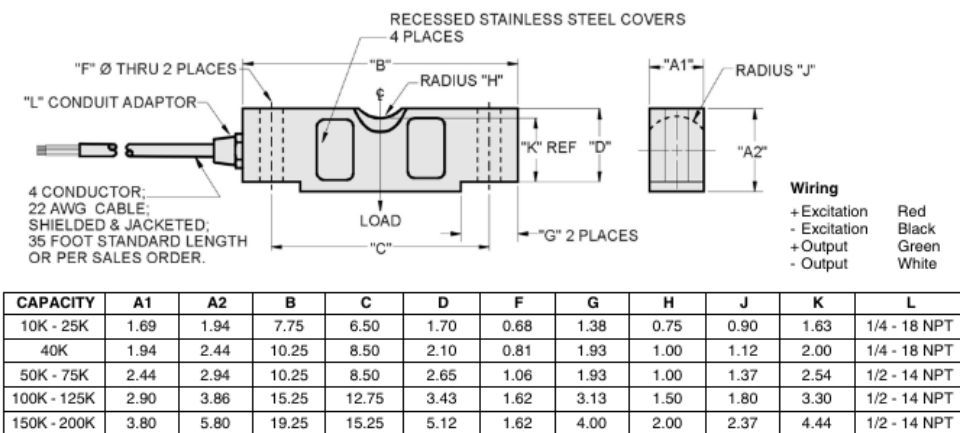
email: [sales@totalcomp.com](mailto:sales@totalcomp.com)

# Specifications

# TDE58

The Totalcomp TDE58 load cells are interchangeable with Sensortronics 65058 double ended beam load cells. They are built to meet or exceed all manufacturers specs for this type of cell. They are constructed of nickel plated steel for washability and protection from harsh environments.

## OUTLINE DIMENSIONS in inches



Part Number	Capacity	Weight	Stock
TDE58-10K	10,000 lb	7 lb	4662
TDE58-20K	20,000 lb	7 lb	4663
TDE58-25K	25,000 lb	7 lb	4664
TDE58-40K	40,000 lb	14 lb	4665
TDE58-50K	50,000 lb	19 lb	4666
TDE58-60K	60,000 lb	19 lb	4667
TDE58-75K	75,000 lb	19 lb	4668

### Performance

Full Scale Output	3.00 mv/v
Combined error	0.02% FS
Nonlinearity	0.02% FS
Hysteresis	0.02% FS
Creep in 30 min	0.03% FS
Non-Repeatability	0.01% FS
Zero Balance	1.0% FS
Overload, Safe	150% FS
Overload, Ultimate	300% FS

### Electrical

Bridge Resistance	
Input	686-714 ohms
Output	699-707 ohms
Excitation Voltage	10VDC(25VDC Max)
Insulation Resistance	1000Mohms@50VDC

### Wiring

35 foot, 4 wire

### Temperature

Compensated Range	-10 deg C to +40 deg C
Operating Range	-18 deg C to +65 deg C
Effect on Zero Balance	0.0010% FS/ deg F
Effect on FS Output	0.0008 FS/ deg F

### Mechanical

Material	Alloy tool steel
Finish	Nickel plated
Sealing	IP67

### Color code

+Excitation	Red
-Excitation	Black
+Output	Green
-Output	White

### Totalcomp Limited Warranty

Totalcomp warrants this product to be free of defects in materials and/or workmanship and suitable for the purpose intended as outlined in this sheet. This warranty is effective and shall cover the purchaser for one year from the date of shipment from our plant. If this product is found to be defective by our inspection in accordance with the above listed criteria, we will replace or repair it at our expense. For warranty service, please obtain a return authorization number from us and return the item, shipping prepaid, with a written description of the problem. We will respond promptly with the results of our evaluation.

**Totalcomp** Scales & Components

13-01 Pollitt Drive Ext, Fair Lawn NJ 07410

Phone 201-797-2718 Fax 201-797-2287

email: sales@totalcomp.com